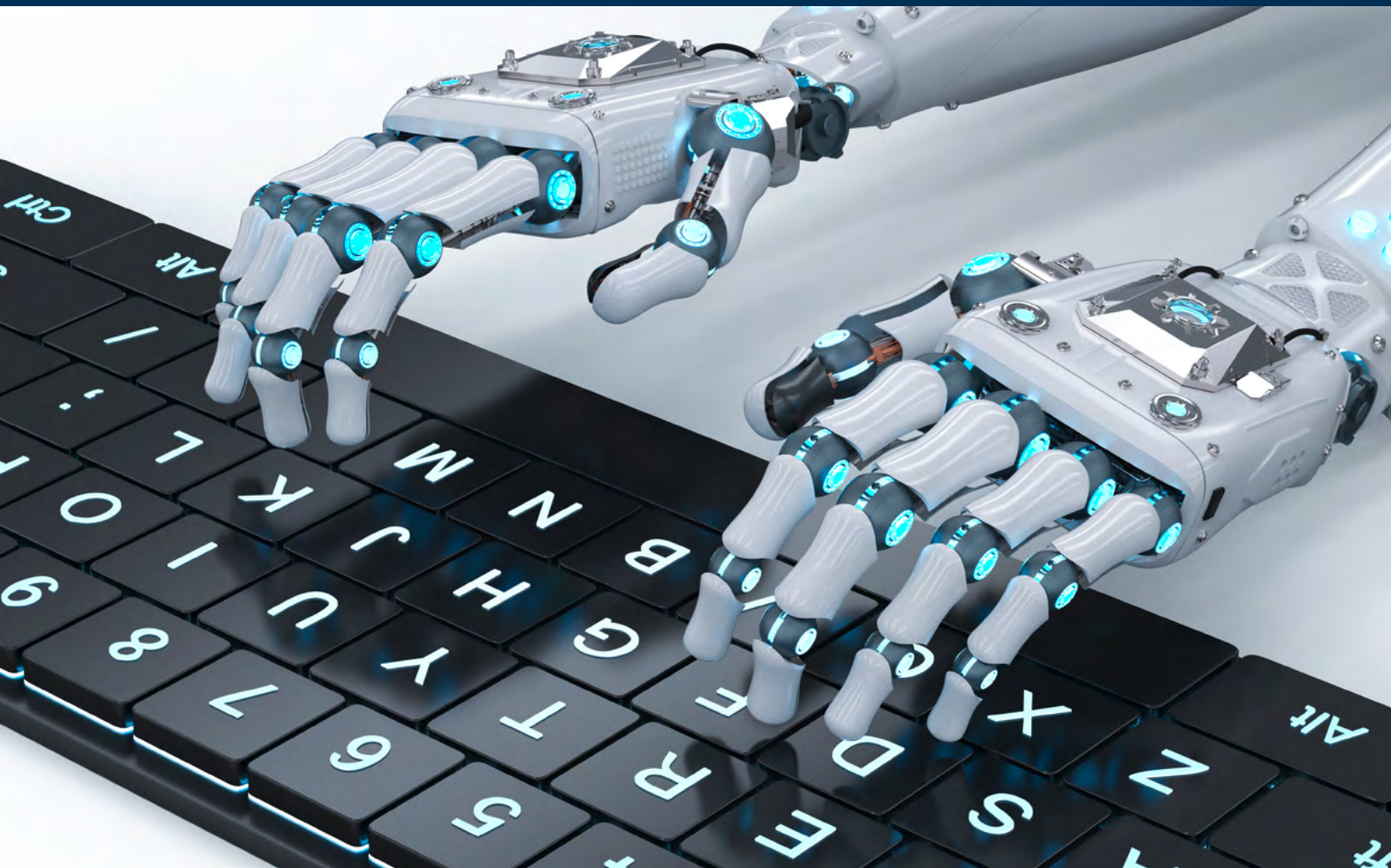


Automated workstation.



Phoenix
RCS



Company history

Peter Nürk, a business information technologist, founds ORCON GmbH in 1992.

„DV Organisation und Beratung“, in Englisch „**OR**ganization and **CON**sulting“ - short **ORCON**.

He is convinced of the idea of offering standard software that is individually configurable. Adaptations are not simply packed into a program, rather the variable data from tables and databases are specifically incorporated.

This significantly reduces the ever more complex and time-consuming adjustments required for updates. In addition, individual customer wishes can be easily implemented and made available to other customers as added value.

This is one of the secrets that makes **Phoenix/PDM** so popular with users.

Today, **Phoenix/PDM** from **ORCON** is one of the few independent and established software solutions from Germany, which ensure the reliable administration and distribution of product information in companies.



Peter Nürk
CEO

ORCON...

- ... meets you at eye level.
- ... is a team of energetic and highly motivated employees.
- ... knows its customers - personally.
- ... supports with professional competence.
- ... inspires in the market with many years of experience.
- ... offers modular products of the highest quality and user-friendliness.
- ... responds to requirements in order to enable suitable solutions.
- ... shows you how simple brilliant solutions can be.
- ... makes your company more productive.



Table of contents

Phoenix/RCS	4
At a glance	5



Automated, unattended update of native CAD formats to current versions and creation of neutral formats.

Our **Phoenix/RCS** offers the possibility of remotely controlling your CAD system at a workstation in the background. Concentrate your resources on added value and leave repetitive activities to the technical systems. This includes the conversion of CAD files from the design department for further processing and visualization in other departments. This is because access to models and drawings for people outside the design department is generally guaranteed today via neutral formats such as PDF and eDrawings. No chargeable programs are required for this, but they allow extensive access to the files.

All formats that the CAD manufacturer offers as a storage option can be automatically created with the **Phoenix/RCS**. In **Phoenix/PDM** you define which formats are always created when saving the original file and which are created on-demand via a selection menu if required. In particular, the conversion of drawings is perfected here. The **Phoenix/RCS** has a CAD interface and can therefore also transfer parameters between **Phoenix/PDM** and the CAD file. This enables us to stamp drawings, enter release and change information, translate and create customer-neutral variants without any additional effort in the design department.

Our customers also achieve a high degree of automation by integrating CAD macros into their processes. This enables us to create contour files for laser cutting programs and calculate the surface of components for estimating painting work. After a CAD release change, our customers regularly have their entire database updated to the new version. In this way you avoid longer loading and storage times in design.

In addition to the CAD systems, our **Phoenix/RCS** also controls other programs. PDF files are also created automatically using Microsoft Office applications. Notifications can be sent by email to users and groups to inform them about approvals, checks or blockages.

You can also integrate your individual, automatable processes with **Phoenix/RCS**. The tasks can be flexibly extended and also integrate other areas such as the ERP system or CAM data.



Phoenix/RCS at a glance

- The storage times at the user are shortened, since the user only saves the native format when saving and is not additionally saving the respective neutral format (PDF, eDrawing, etc.).
- Other departments can have **Phoenix/RCS** generate any neutral formats (e.g. DXF) without calling the design department. This function can also be restricted by rights. The designer can concentrate more on the construction.
- Often a status stamp has been stored in the drawing frame („in progress“, „release“, „for inspection“, etc.). If you have now saved your drawing (in status „in progress“) and then release it, the drawing cannot be saved again (and the PDF, for example, will be updated) because the drawing is now in an unchangeable status. This means that a status stamp for a fixed status can only be subsequently stamped on the drawing by printing the drawing via the spooler. That can be problematic, since one could print a PDF also directly and thus the stamping can be bypassed.
Phoenix/RCS solves this problem because it is not bound to any permissions. After approval it loads the drawing, updates the text field with the status stamp and saves the neutral format back into the system.
- **Phoenix/RCS** is a software that allows you to control other programs remotely.
- This way the **Phoenix/RCS** can also run other programs and scripts. Even ERP connections can be realized via **Phoenix/RCS**.
- When migrating CAD data, **Phoenix/RCS** can also be used to save all models in the new CAD version.
- If the drawing frame changes in the company, it can be automatically exchanged for all drawings.



Phoenix/PDM

Your software for product data management.

Phoenix/PDM is your tool for managing project data, CAD models and drawings. It offers all departments in the company easy and flexible access to their virtual data.



Phoenix
2D-CAD

Interfaces to 2D-CAD software.

Complete integration of the interfaces into the user interfaces of the CAD systems Autodesk Inventor, PTC Creo Parametric, PTC Creo Elements/Direct Modeling and SolidWorks.



Phoenix
3D-CAD

Interfaces to 3D-CAD Software.

Complete integration of the interfaces into the user interfaces of the CAD systems Autodesk Inventor, PTC Creo Parametric, PTC Creo Elements/Direct Modeling and SolidWorks.



Phoenix
VIEW

Simple presentation of your documents.

Visualization and printing of neutral formats, raster data as well as naive CAD formats via plugins, eDrawings, 3D-PDF, PVZ, etc.



Phoenix
RCS

Automated workstation.

Automated, unattended update of native CAD formats to current versions and creation of neutral formats.



Phoenix
ERP

Interfaces to ERP systems.

Phoenix/PDM creates the bridge between CAD, PDM and ERP. We thus offer the appropriate interfaces for an automatic exchange of data between PDM and the ERP system.



Phoenix
BOM

Intelligent bill of materials management.

Simple and uncomplicated administration and creation of construction parts lists, optional connection to the ERP system.



Phoenix
OFFICE

Interface to Microsoft Office.

Complete integration into the user interfaces of Microsoft Office, as well as continuous integration into the **Workflow**.



Phoenix
OUTLOOK

Interface to Microsoft Outlook.

Complete integration into the user interface of Microsoft Outlook, as well as continuous integration into the **Workflow**.



Phoenix
SPOOL

Integrated print and plot management.

Print entire project folders or sets of drawings at the touch of a button, scaled to a desired target format, with a stamp if necessary.



Phoenix
MOBILE

Mobile access to your data.

Make better decisions with secure and fast mobile access to critical business data anytime, anywhere in the world.



Phoenix
DFS

Synchronize data from distributed locations.

Automatic configurable synchronization of your file archives between all locations. This gives you secure access to your data at any location.

The right product data management for your success.



Phoenix/PDM



Phoenix
2D-CAD



Phoenix
3D-CAD



Phoenix
VIEW



Phoenix
RCS



Phoenix
ERP



Phoenix
BOM



Phoenix
OFFICE



Phoenix
OUTLOOK



Phoenix
SPOOL



Phoenix
MOBILE



Phoenix
DFS

The solutions for your individual **Product Lifecycle Management**.

Brilliant solutions are simple.